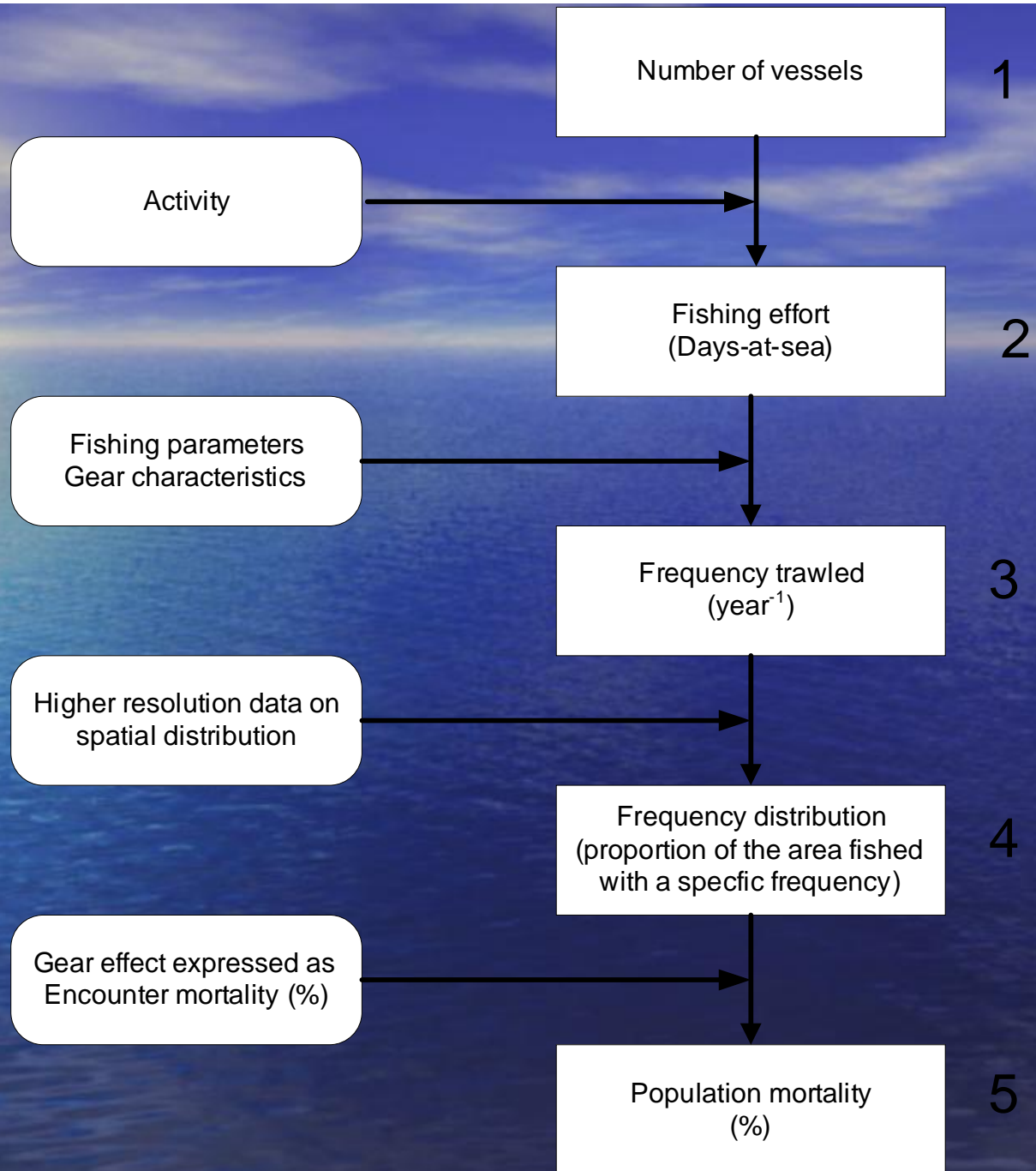
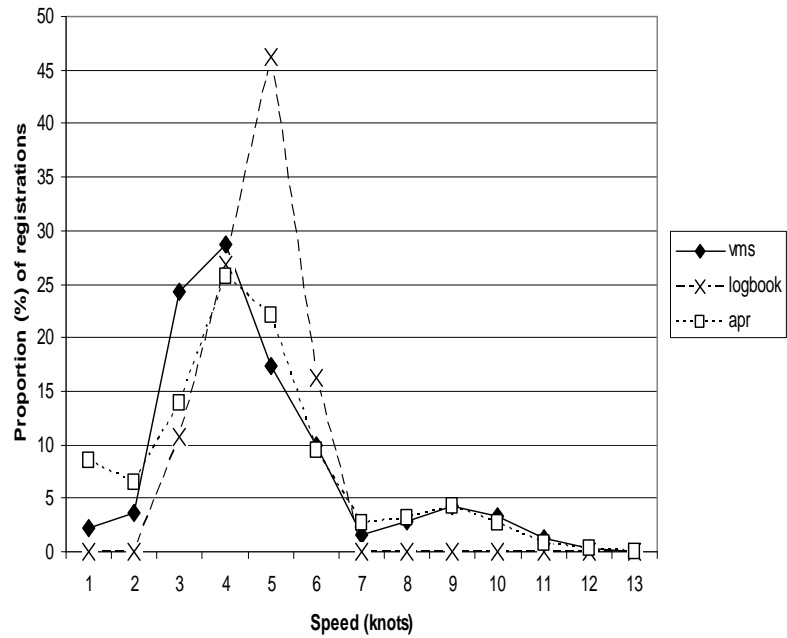


Ecosystem Approach to Fisheries Management (EAFM)

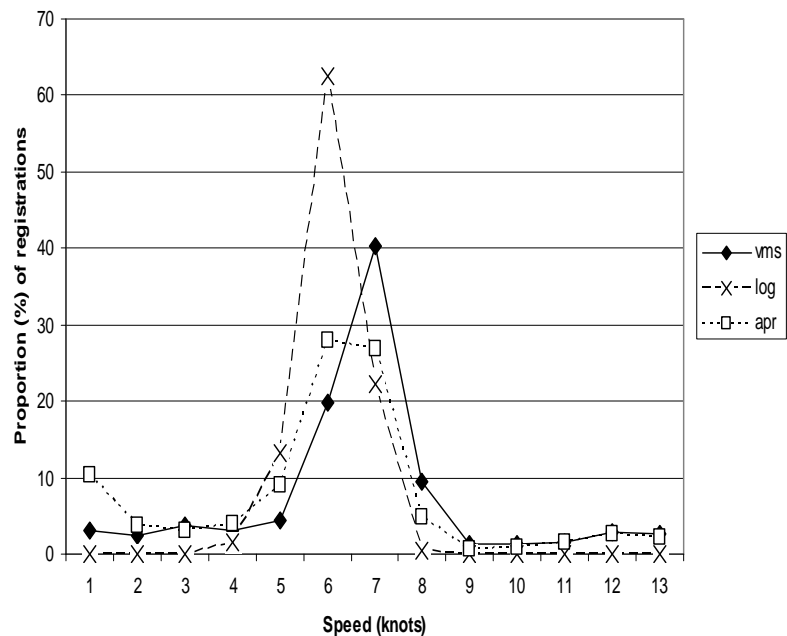
- State indicators: Since policy commitments and associated objectives relate to state, the reference points, trajectories or directions needed to measure progress towards meeting objectives are initially set for state indicators
- Pressure indicators: information on manageable human activity is essential to manage state and often has the desirable properties of ease of measurement and rapid response times



Level 2 \longrightarrow Level 3



| Hp | Speed | % fishing | hours | Area (km2) |
|----|-------|-----------|-------|------------|
| 1 | 4,2 | 80,4 | 19,3 | 1,2 |
| 2 | 6,7 | 73,9 | 17,7 | 5,3 |



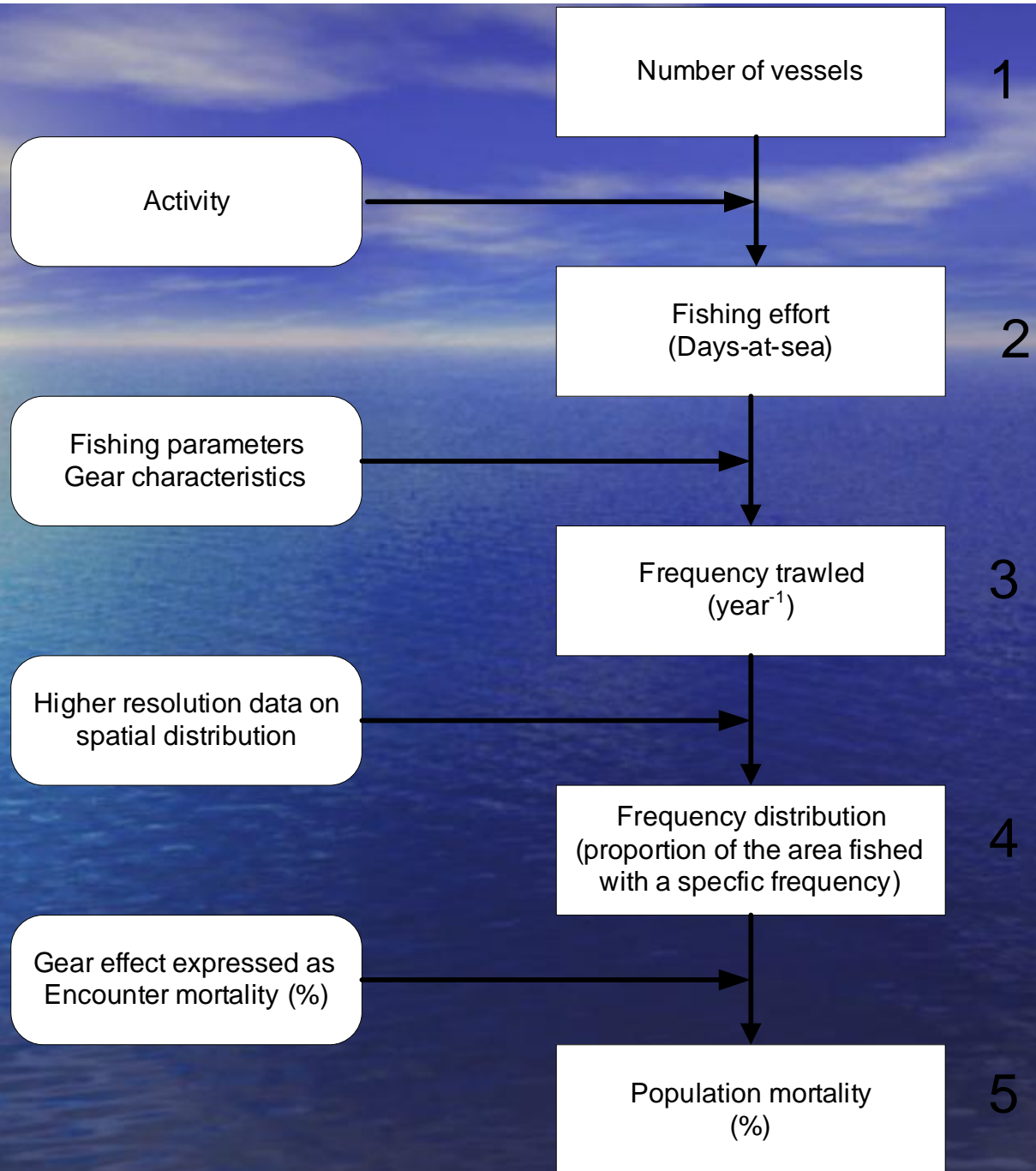
1000 days-at-sea in one ICES rectangle

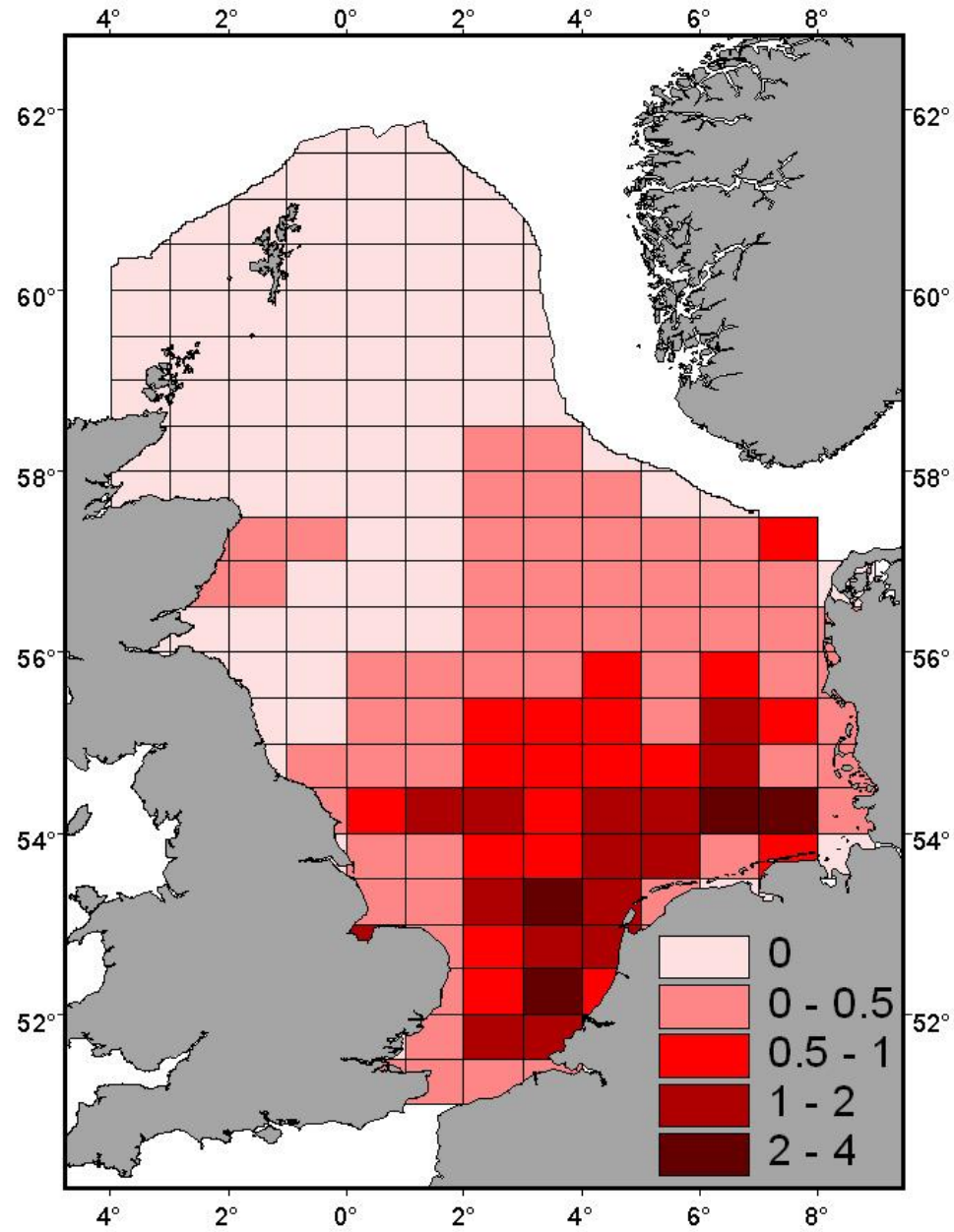
=

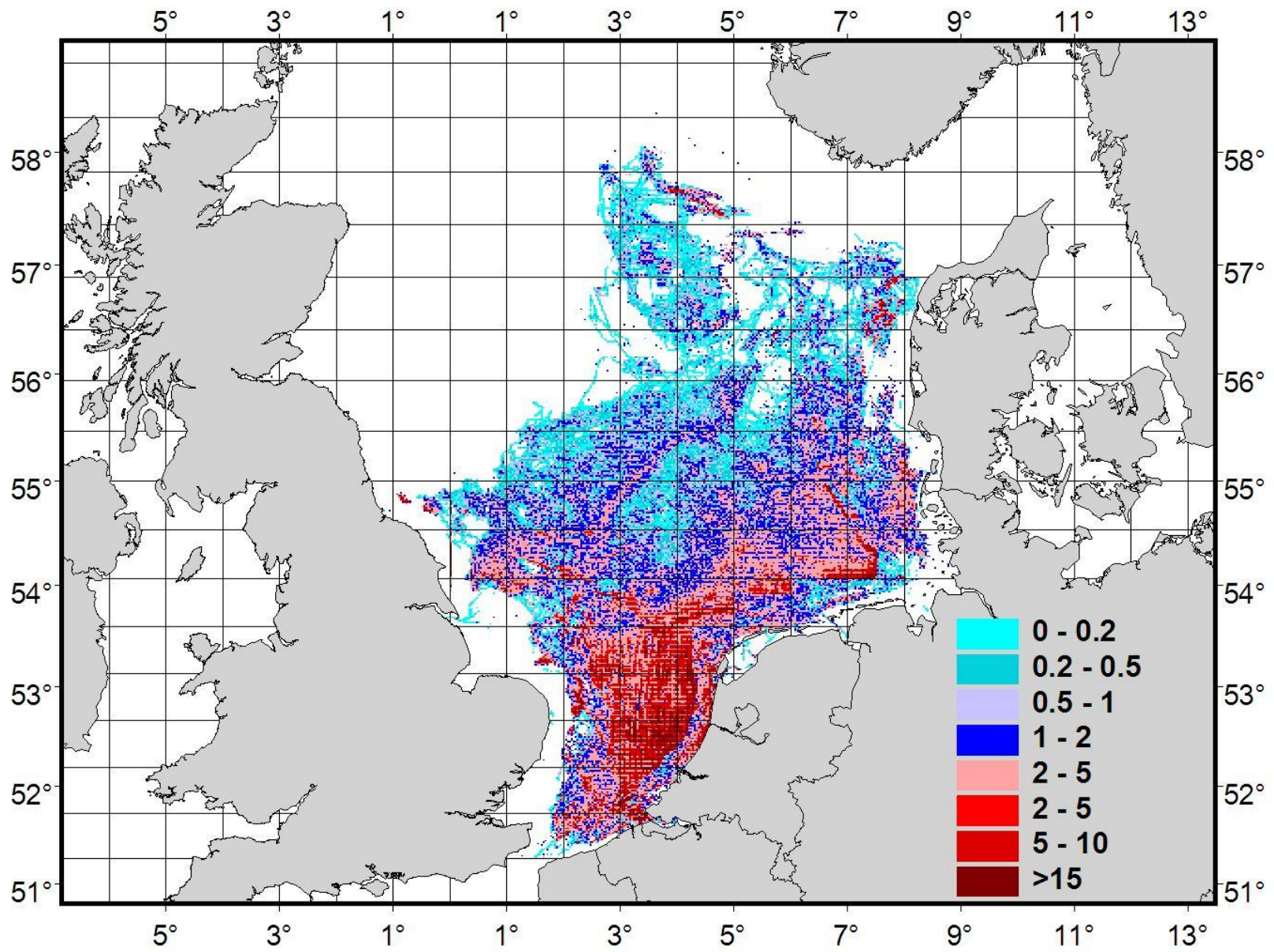
Frequency 0.4 per year HP1

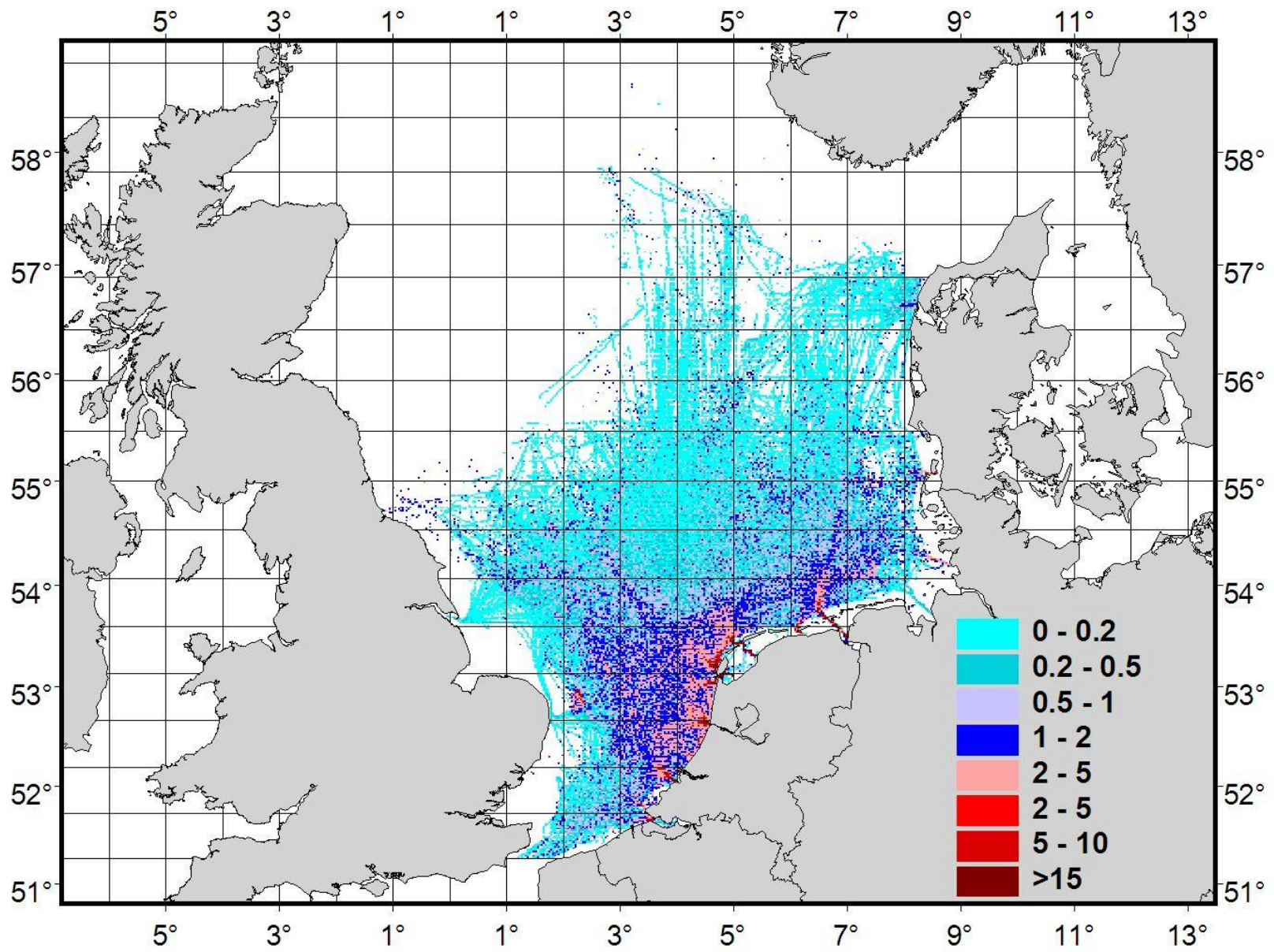
or

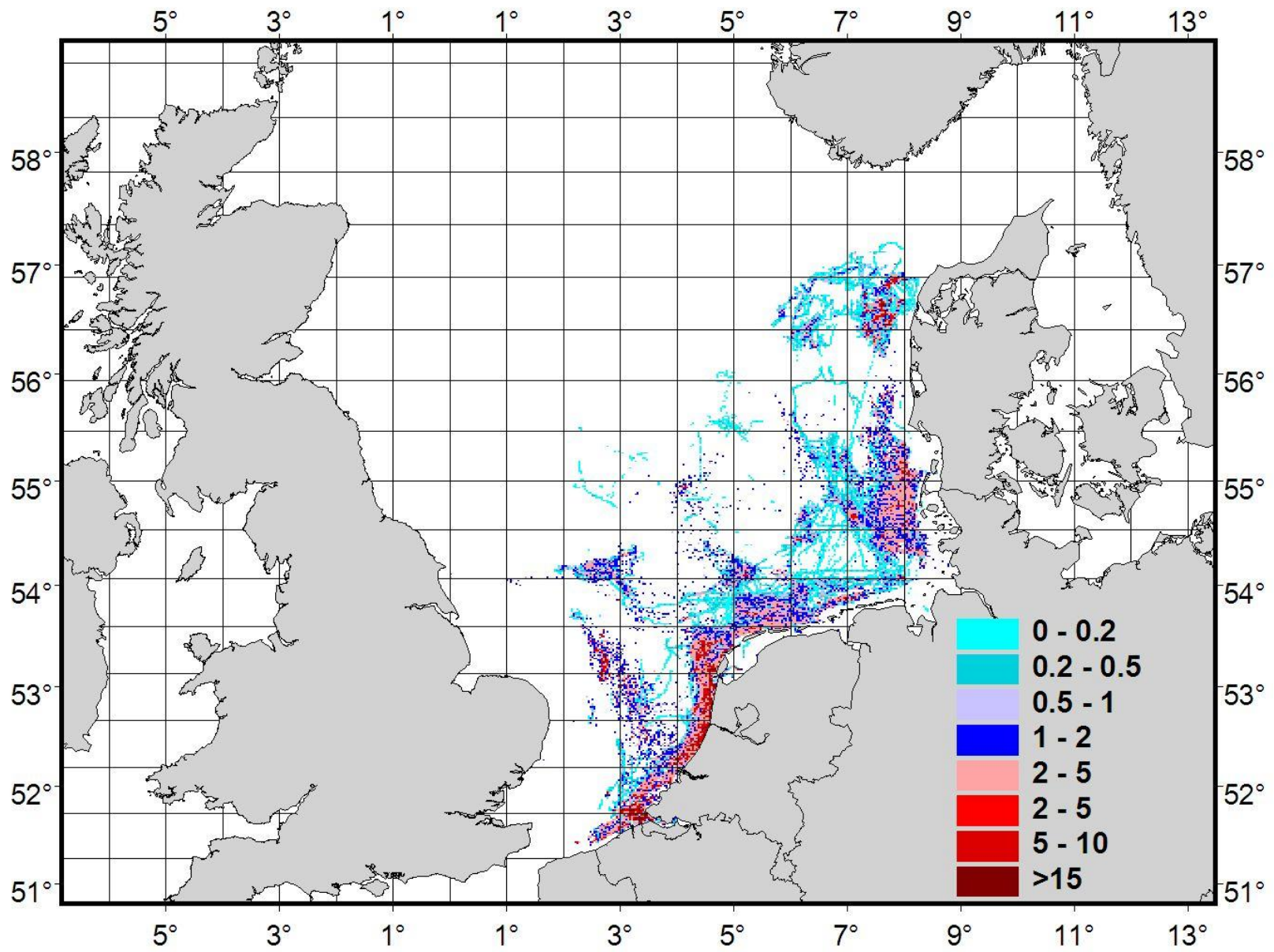
Frequency 1.7 per year HP2

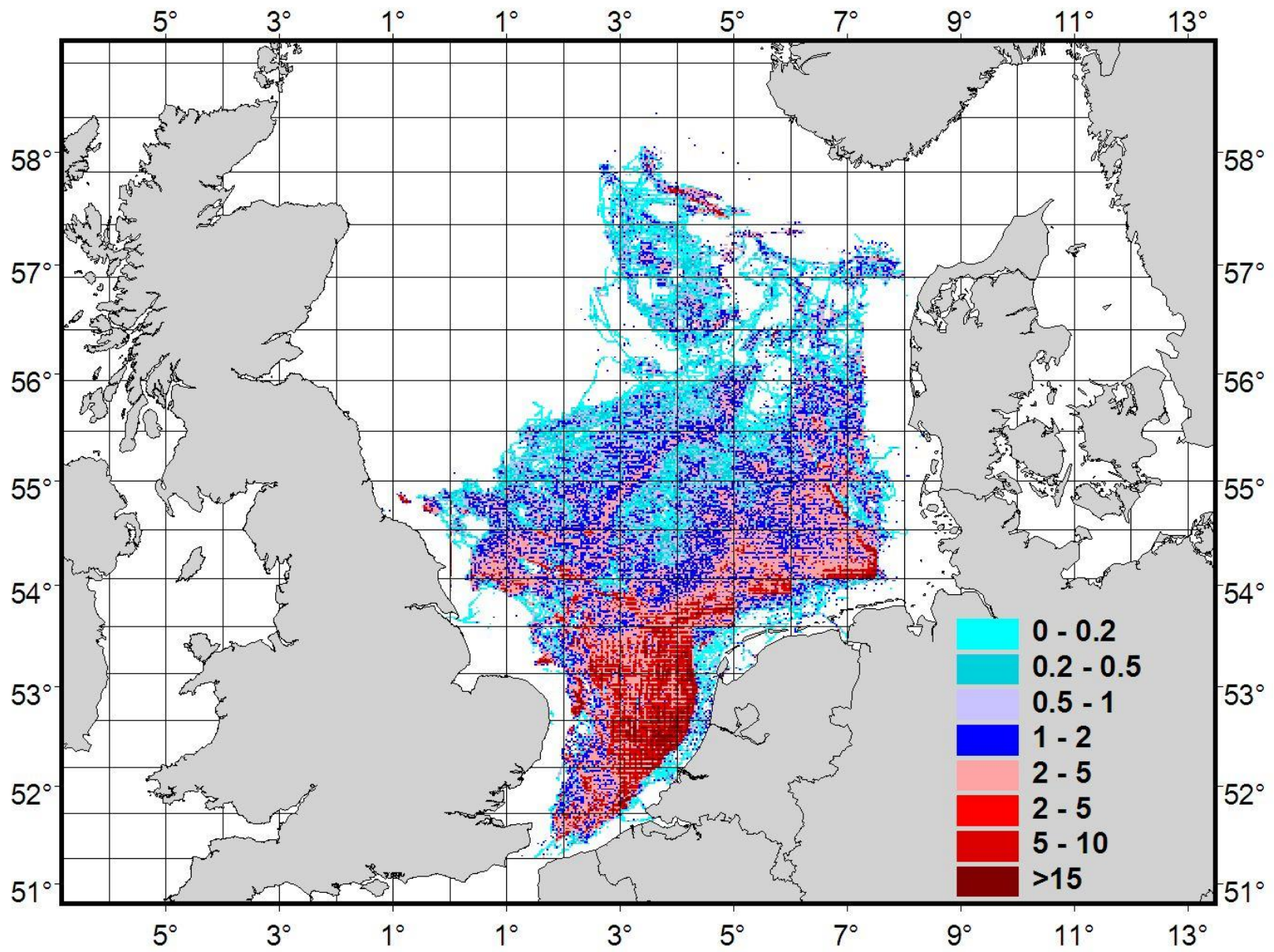






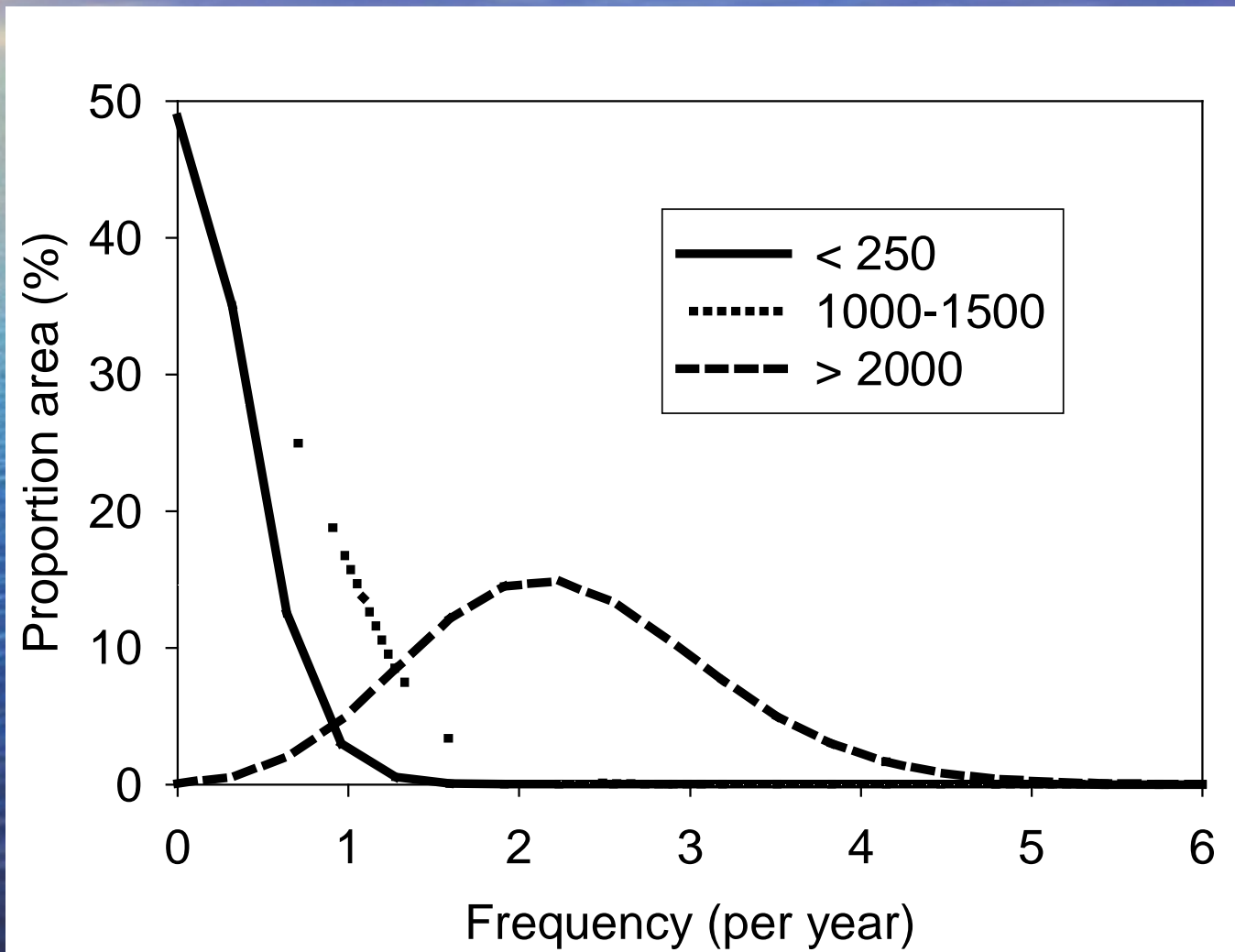


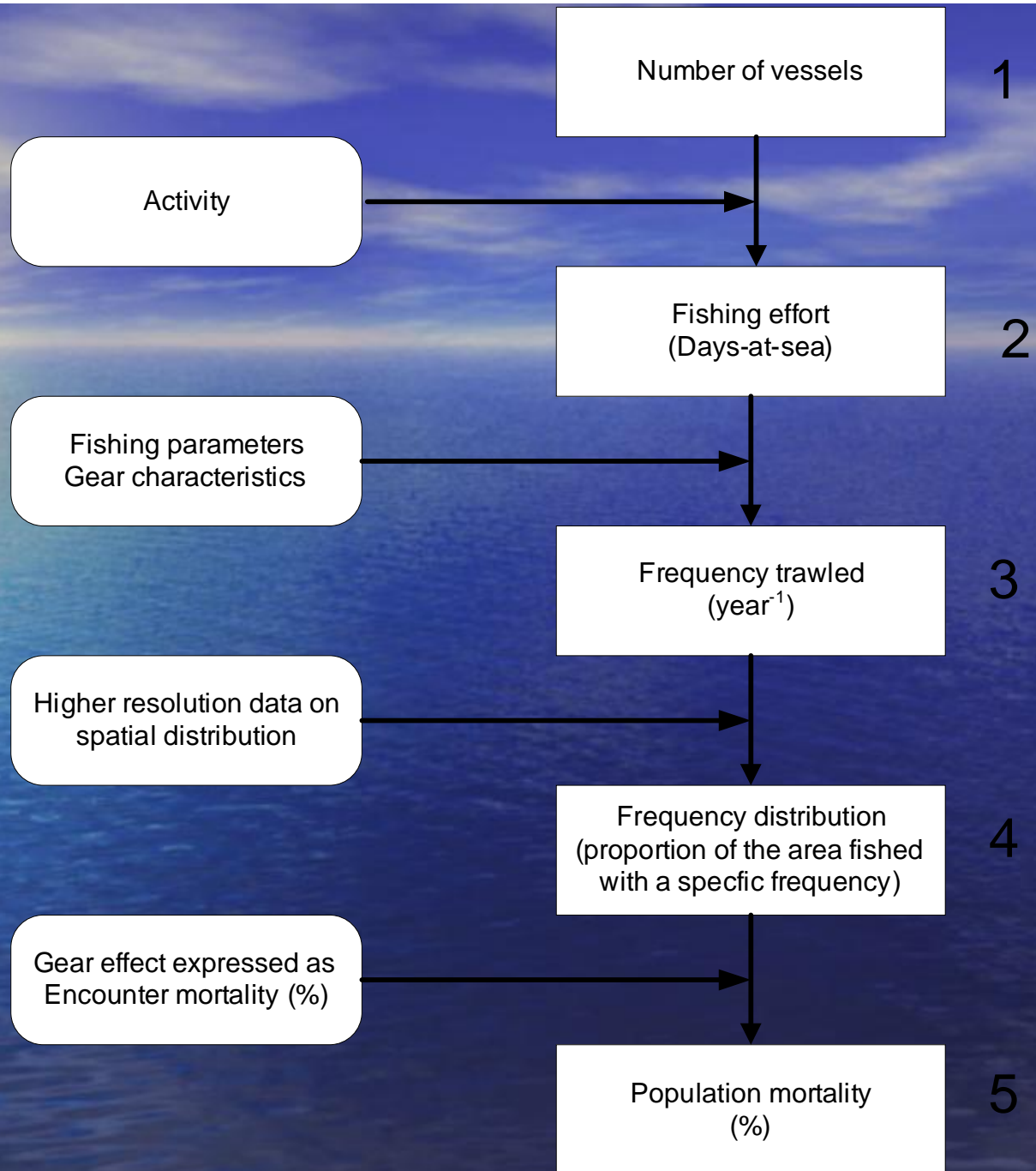




Level 3 → Level 4

Mean frequency → Frequency distribution





| Level 2 | Level 3 | Level 4 | Level 5 | Population mortality |
|---------|---------|---------|------------|----------------------|
| | | | Low (10%) | 36 |
| | | even | | |
| | | | High (70%) | 81 |
| | <300 | | | |
| | | | Low (10%) | 1 |
| | | patch | | |
| | | | High (70%) | 10 |
| 1000 | | | | |
| | | | Low (10%) | 43 |
| | | even | | |
| | | | High (70%) | 100 |
| | >300 | | | |
| | | | Low (10%) | 6 |
| | | patch | | |
| | | | High (70%) | 41 |

Impact of gear per unit of effort differs between métiers

