

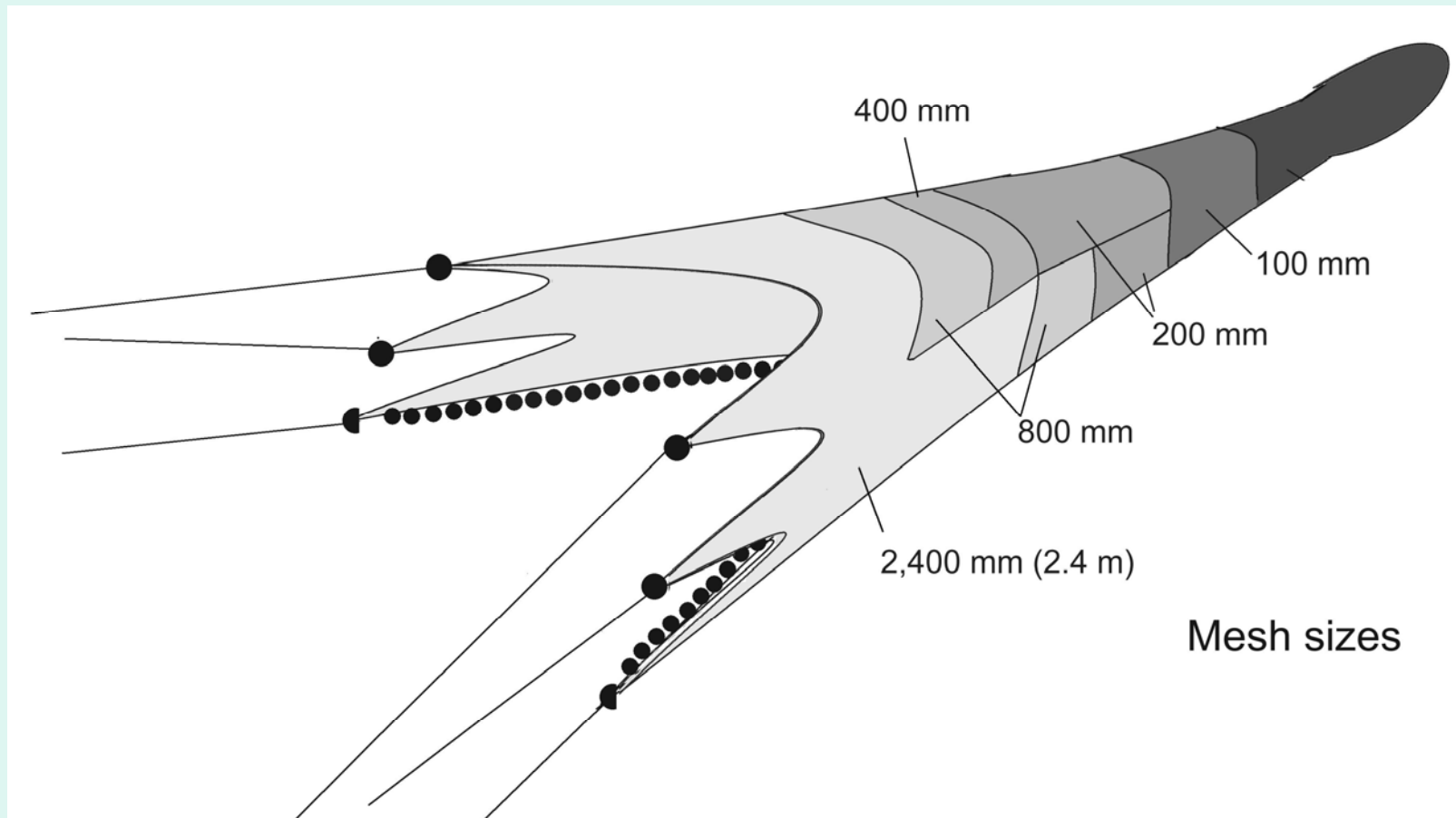
North sea trials with the Eliminator trawl (2007-08)

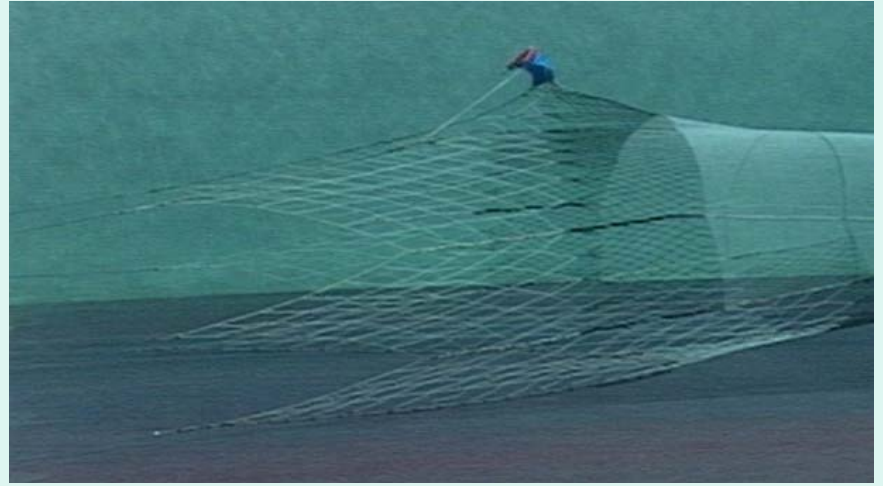
- Andy Revill
- Cefas, Lowestoft, UK

- Feb 2009
- North Sea RAC meeting (Berlin)

The 'Eliminator' trawl

(designed by Superior Trawls, Rhode Island, USA)









Eliminator



Standard trawl

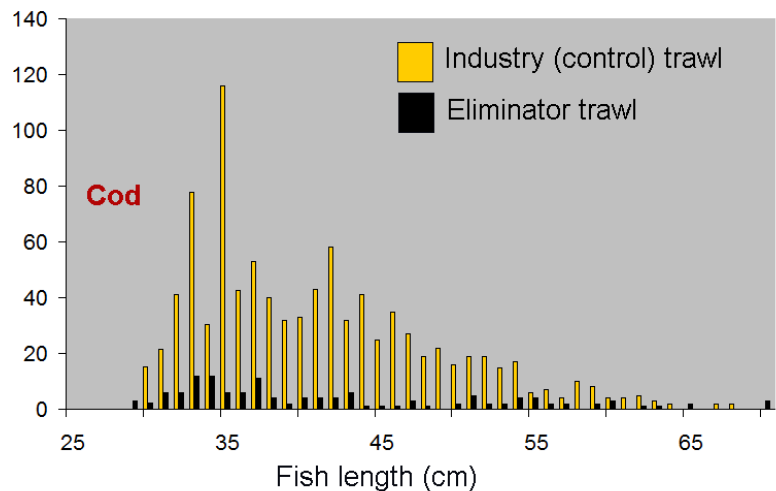
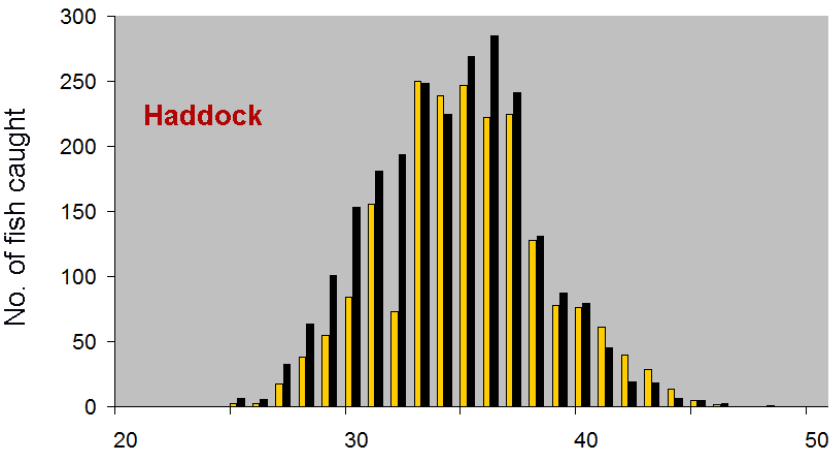
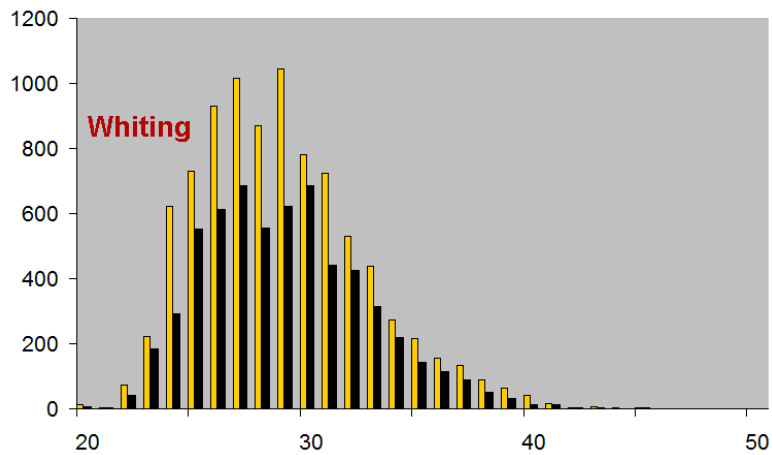
1st North Sea trials (Nov 2007)
MFV's Our Lass II & Jubilee Quest
Eliminator and industry trawl compared
(towing parallel hauls)



2nd North Sea trials (Dec 2008)

MFV's Carousel & Eagernoon (Pair trawling team)
Eliminator and industry trawl compared
(towing each gear on alternate hauls)





RESULTS

- Haddock catches similar
 - 84-90% less cod in Eliminator
 - Fewer small whiting in Eliminator
 - Fewer discard species in Eliminator
- Reduced catches of commercial flatfish (plaice, lemon sole, sole) and monkfish in the Eliminator

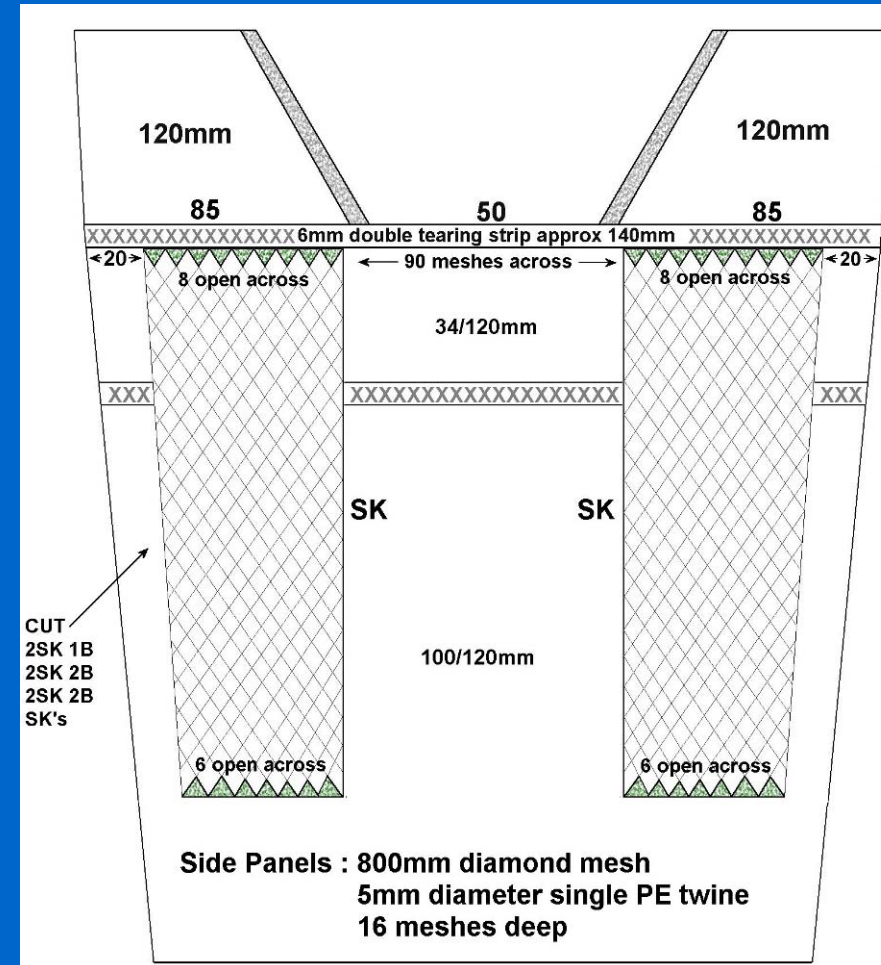
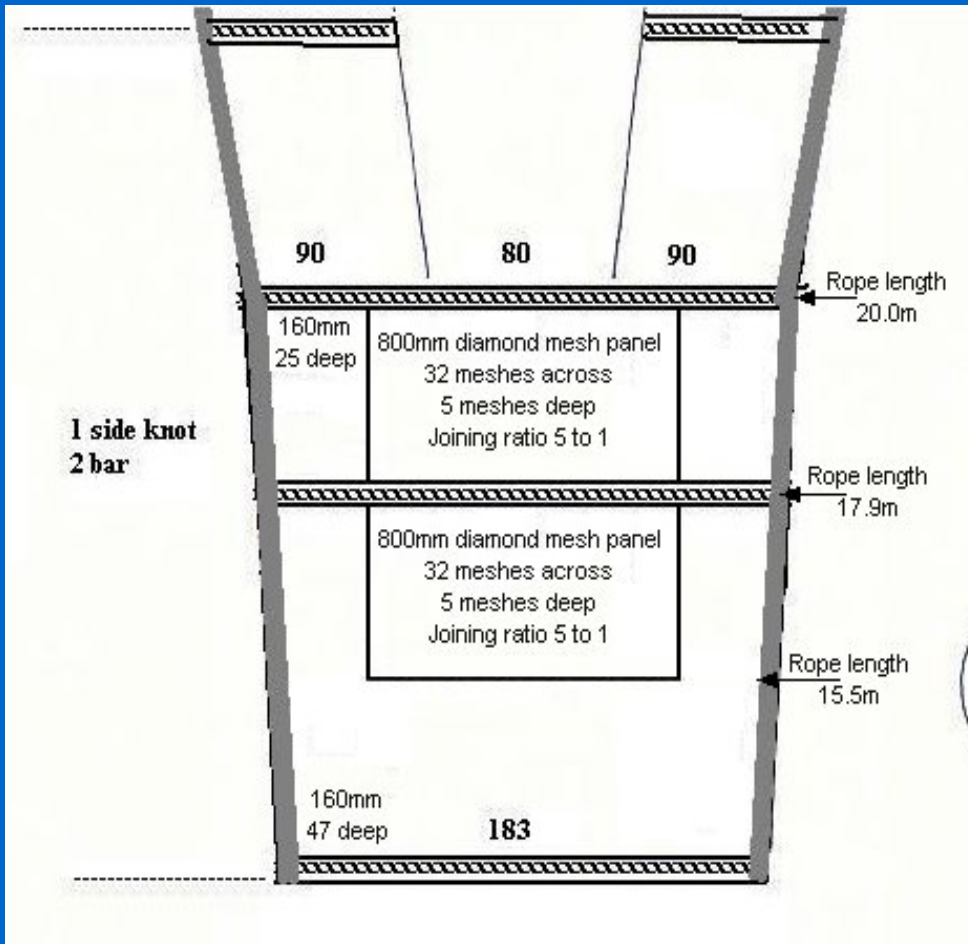
Primary Conclusions

- The Eliminator trawl is effective in catching haddock (and also whiting) in the North Sea
- North Sea trials replicate USA findings
- Eliminator trawl is effective for cod reduction in North Sea mixed demersal fisheries
- The reduced catches of other commercial species (flatfish and monkfish) may limit the commercial appeal of the Eliminator
- Eliminator currently used as a 'benchmark' for cod reduction in cod recovery programme (December 2008 EC Fisheries Council)

Further UK work planned with Eliminator (2009)

- Underwater filming – where exactly are the cod escaping from ?
- Is the Eliminator effective at catching saithe ?
- Building and testing a smaller Eliminator (i.e. for 300 HP vessels / twin rig)
- How do larger mesh belly panels compare to the Eliminator ?
- Can losses of commercial flatfish and monkfish be minimised ?

FRS trials with large mesh belly escape panels (2008)



Scottish (SFF) 'Orkney' trials

From: unknown Page: 1/2 Date: 14/11/2008 08:57:30

